

Raft Tectonics in SE Brazil as an example of large-scale gravitational collapse on continental margins.

Aldina Piedade¹, Tiago Alves¹, José Luís Zêzere²

¹School of Earth and Ocean Sciences, Cardiff University. United Kingdom

²Institute of Geography and Spatial Planning, Universidade de Lisboa, Lisboa, Portugal
piedadeam@cardiff.ac.uk

Aldina Piedade was awarded £500 by a Postgraduate Conference Attendance Grants from British Society for Geomorphology to attend the 8th IAG International Conference on Geomorphology, August 27th to 31st, 2013.

The work presented as a poster presentation is part of my PhD at School of Earth and Ocean Sciences at Cardiff University and it was titled "Raft Tectonics in SE Brazil as an example of large-scale gravitational collapse on continental margins" by Aldina Piedade, Tiago Alves and José Luís Zêzere.

This research aims to provide a better understanding of raft tectonics in the Offshore Espírito Santo Basin, SE Brazil (Figure 1).

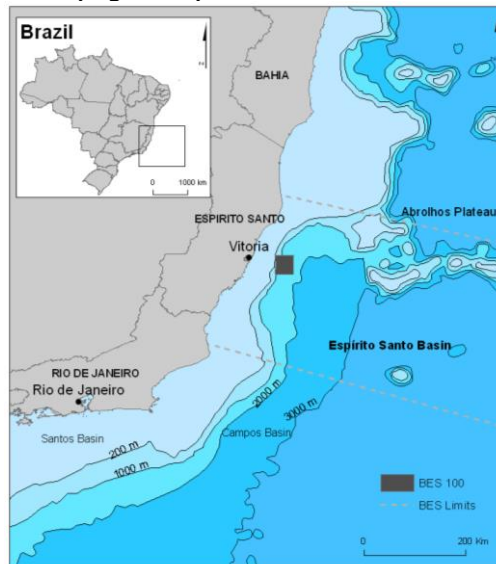


Figure 1 – Map of southeast Brazilian margin highlighting the location of the study area (Block BES 100). The map shows the main structural elements that separate Espírito Santo from the Campos and Santos basins.

My participation at the conference was a great opportunity to show and discuss the work presented, but also to get into a post-graduate and young researchers network interested in the same topics which constituted an improvement my work and future network career.

The outputs of the work presented are:

- Post presentation at the referred conference: 8th IAG International Conference on Geomorphology (August, 2012);
- Submitted paper to Marine and Petroleum Geology (accepted);
- 1 Internal seminar at School of Earth and Ocean Sciences, Cardiff University (13th March, 2014).
- 1 chapter of a PhD Thesis (expected December, 2016)